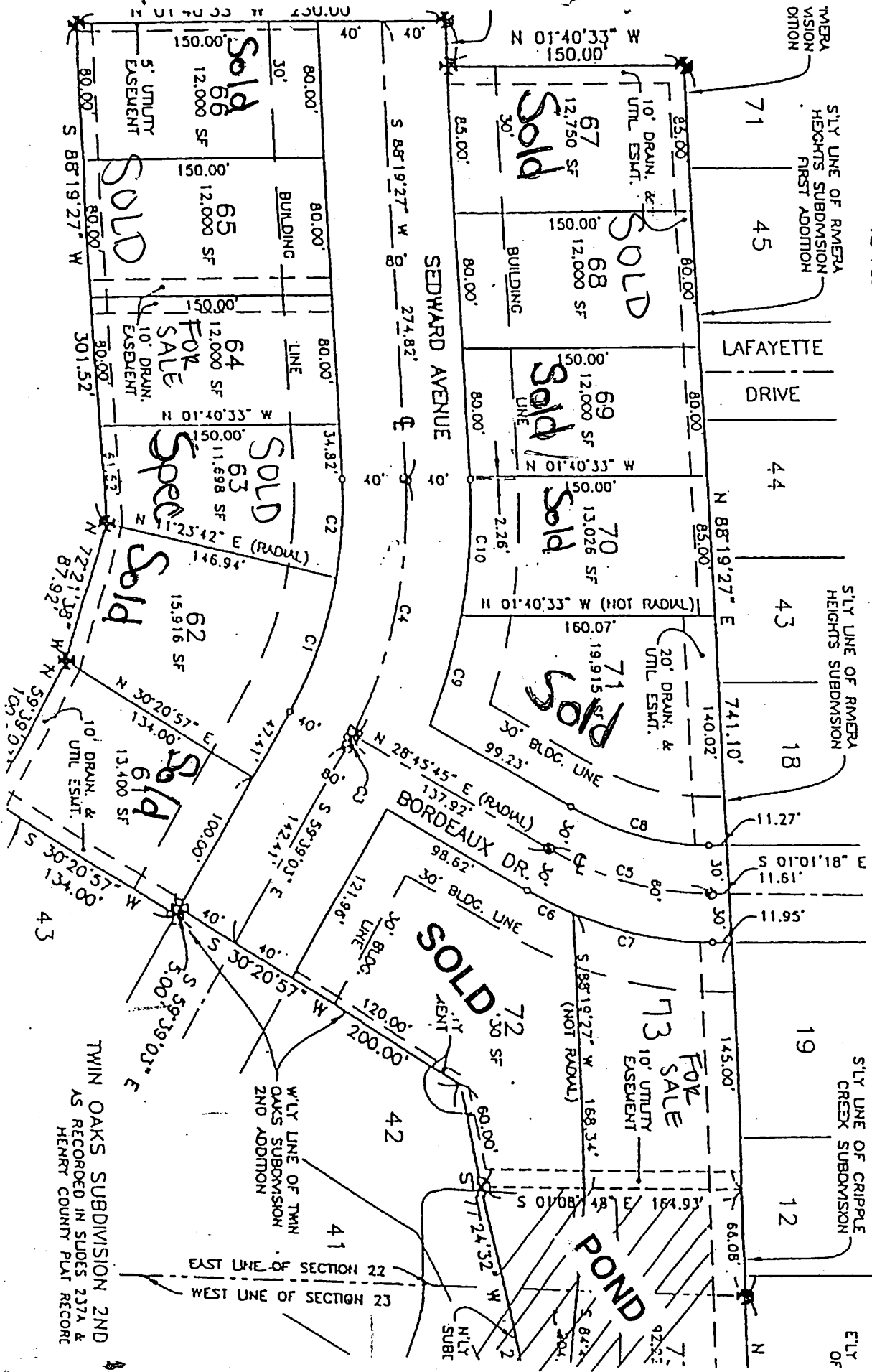


# TWIN OAKS SUBDIVISION - 4TH ADDITION

RIVIERA HEIGHTS SUBDIVISION, FIRST & SECOND ADDITION  
 AS RECORDED IN SUDES 151, 133 & 153 RESPECTIVELY, HENRY COUNTY PLAT RECORDS

CRIPPLE CREEK SUBDIVISION  
 AS RECORDED IN SUDES 237A & 237B RESPECTIVELY, HENRY COUNTY PLAT RECORDS



TWIN OAKS SUBDIVISION 2ND  
 AS RECORDED IN SUDES 237A & 237B  
 HENRY COUNTY PLAT RECORDS